

Appendices

Appendix 1- Elementary School Audit Reports



Houghton Elementary Walking Audit

Background

Date: October 7, 2019, 3:30-5:00 PM

Weather: Partly Cloudy, high of 54°F, low of 41°F

Stakeholders Present:

- Two MTU Students
- Student Grade 5
- Student Grade 3
- Student Grade 1
- Student Parent

Top 5 Observations:

- No sidewalks
- Sidewalks too close to street
- Lots of speeding cars
- Driver's view obstructed by slope of roads
- Lack of crosswalks

Notables

"It's alarming to watch your brother walk [to school]."

Parent of 1st grader

"While the sidewalk is close to the road, I'm just happy there is a sidewalk."

Parent of 1st grader

The Walk:

Route 1: South on Military Rd., North on Dodge St.



1 Frue Ave South-East of Elementary School

Frue Ave, facing west



Steep declining slope leads to intersection with Military road. Shrubbery forces pedestrians to walk in road at points.



Long stretch of no sidewalk. Few streetlights. Large portion of road is connected with busy parking lot on the left.

2 Dodge St East of Houghton Elementary School

Dodge St, facing north



Sidewalk on the left side is hardly distinguishable from the road. Cars speed on this road. Fair amount of school children walk through here.

Dodge St, facing south



This road has several sharp declining slopes, rendering oncoming traffic difficult to see. Sidewalk has ended, leaving no designated walking spaces.

3

East Douglass Ave, North-East of Houghton Elementary School

East Douglass Ave, facing west



Sharp incline in road right before an intersection. No sidewalks or designated walking areas. Stop sign is fixed to tree on the right.

East Douglass Ave, facing east



No crosswalks, sidewalks or street lights. Poor visibility with oncoming traffic due to plateaued intersection.

4

Bridge St, North-East of Houghton Elementary School

Bridge St, facing north



Only left side of the road has sidewalk. Cars speed. Not many street lights.



Sidewalk ends. Heavy and fast traffic during school drop-off/pick-up. Few street lights.

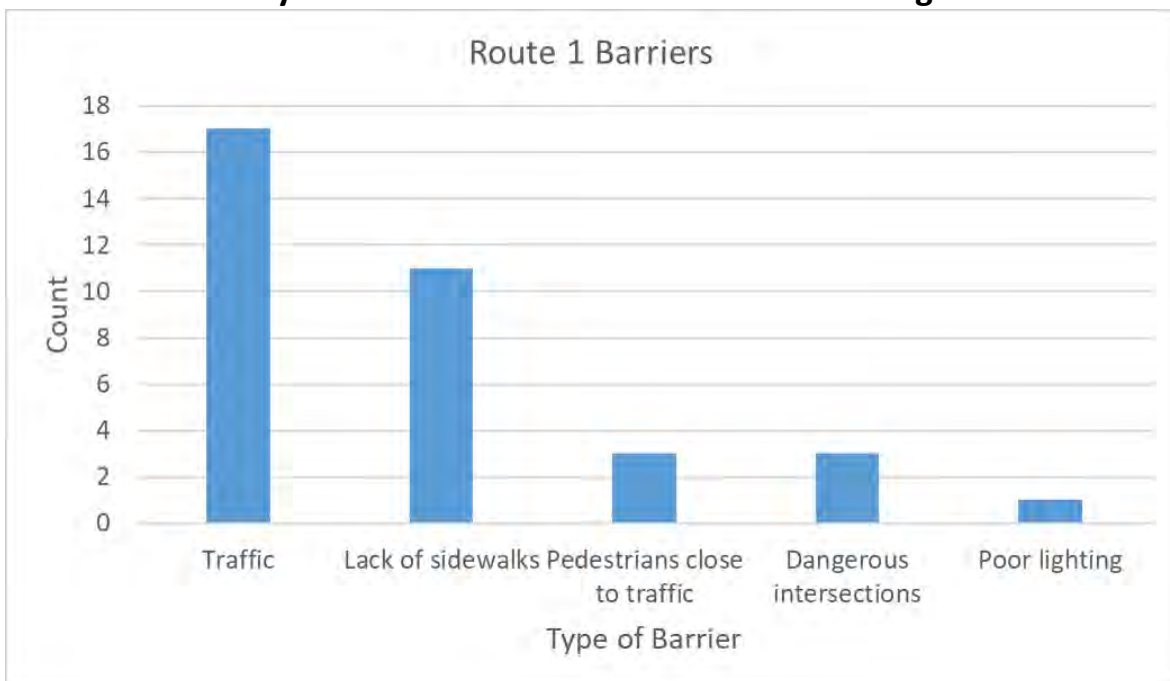
Houghton Elementary Walking Audit

Map of all observations

Route 1: South on Military Rd., North on Dodge St.



Summary Statistics of Selected Observations Along Route



Houghton Elementary Walking Audit

Background

Date: October 7th, 2019, 3:30-5:00PM

Weather: Partly Cloudy, high of 54°F, low of 41°F

Stakeholders Present:

Core Planning Team Member

MTU Research Students (2)

Top 5 Observations:

- No sidewalk or trail
- No pedestrian sign or marked crosswalks
- Speed limit not obeyed
- No vehicle stop sign or traffic signal
- Drivers view obstructed by hills

Notables

"People go too fast on this road"

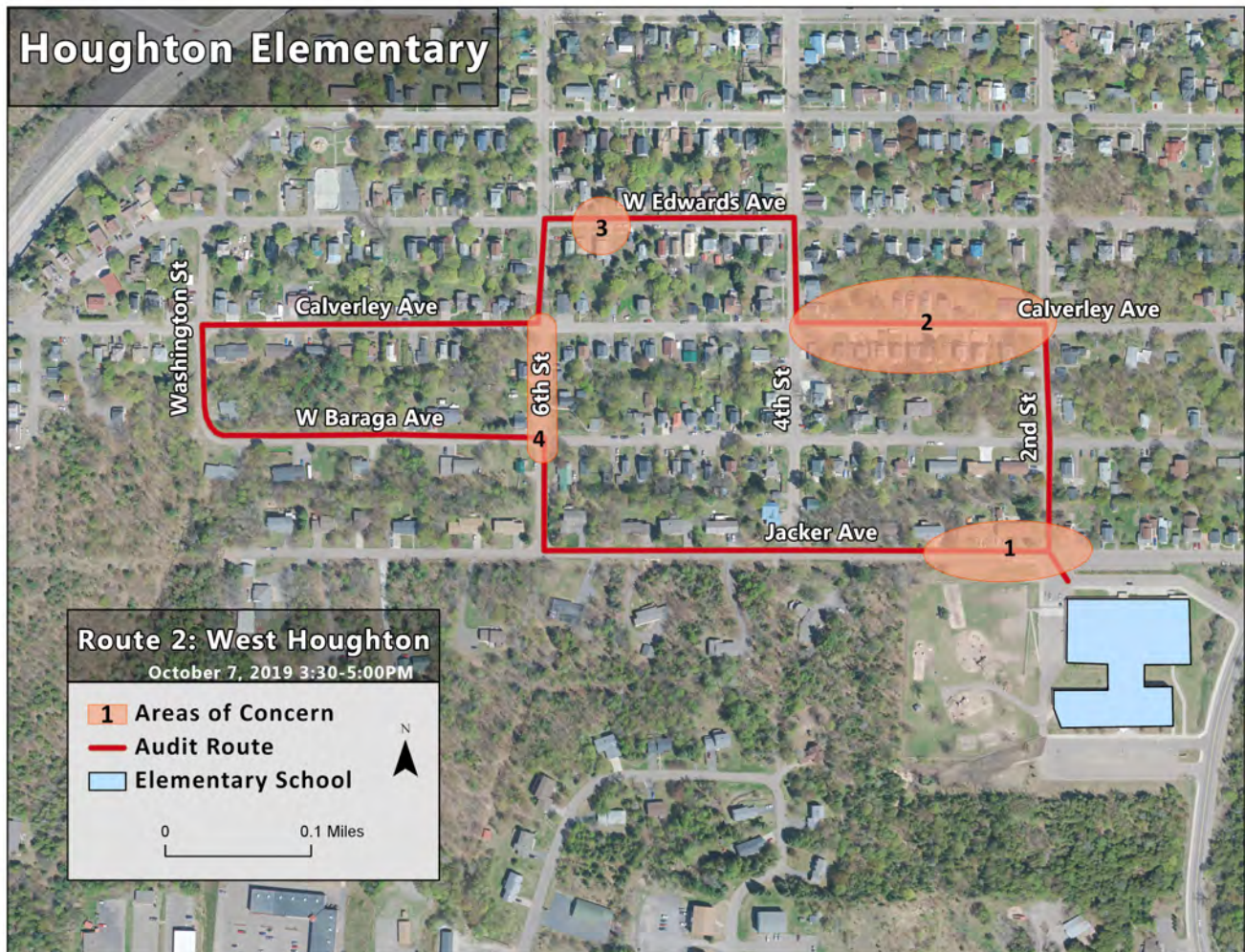
- Core Planning Team Member

"Most people don't stop at this stop sign"

- Community Member

The Walk:

Route 2: West Houghton Neighborhood



1

School Zone Intersection of Jacker Ave and 2nd St

Jacker Ave, facing west



Sidewalk ends on school grounds. No sidewalk on north side of Jacker Ave in the School Zone.



No sidewalk on either side of Jacker Ave and hill obstructs driver's view in the School Zone.

Jacker Ave, facing east



Poorly marked crosswalk and no sidewalks on north side of Jacker Ave in the School Zone.

2

Calverley Ave between 2nd St and 4th St

Calverley Ave & 4th St, facing north



No crosswalks or sidewalks at this intersection. Vehicles do not obey speed limits nor do they have stop signs on 4th St.

Calverley Ave & 2nd St, facing north



Vehicles do not obey speed limits at this intersection. Steep hill obstructs driver's view driving south. No sidewalks or crosswalks at this intersection.

Houghton Elementary Walking Audit

3 Edwards St between 4th St and 6th St

Edwards Ave, facing west



Sidewalk along the south side of Edwards Ave abruptly ends 90 feet before reaching the intersection with 6th St. This sidewalk is poorly maintained. There is no sidewalk on the north side of Edwards Ave nor the street segment west of 6th St.

4 6th St between Calverley Ave and Baraga Ave

6th St & Baraga Ave, facing northeast



No crosswalks or sidewalks at this intersection and vehicles drive too fast down hills.

6th St & Calverley Ave, facing south



No vehicle stop signs, no sidewalks or crosswalks, and hill obstructs driver's view at this intersection.

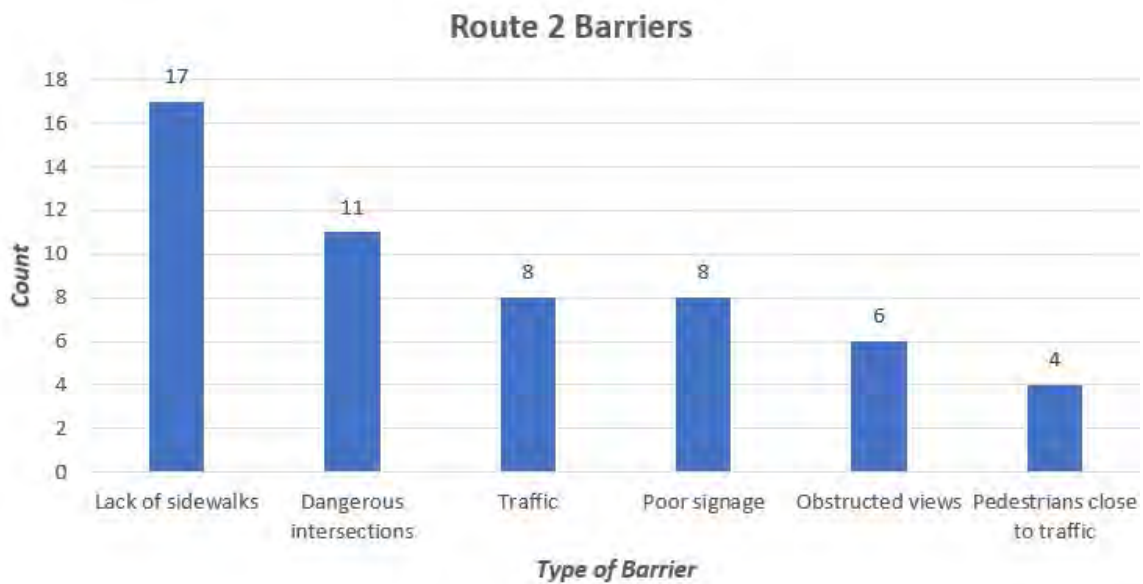
Houghton Elementary Walking Audit

Map of all observations

Route 2: West Houghton Neighborhood



Summary Statistics of Selected Observations Along Route



Houghton Elementary Walking Audit

Background

Date: October 7, 2019, 3:30-5:00 PM

Weather: Partly Cloudy, High of 54°F, Low of 41°F

Stakeholders Present:

Two MTU Research Students
Kindergarten Student
Parent and City Planner

Top 5 Observations:

- Significant Areas lacking Sidewalks
- Significant Areas lacking Crosswalks
- Limited Lighting
- Seasonal Sidewalk Obstructions
- Hazardous Traffic

Notables

"The roads get so narrow in the winter, also cars park along sidewalks and yards during the winter parking ban."

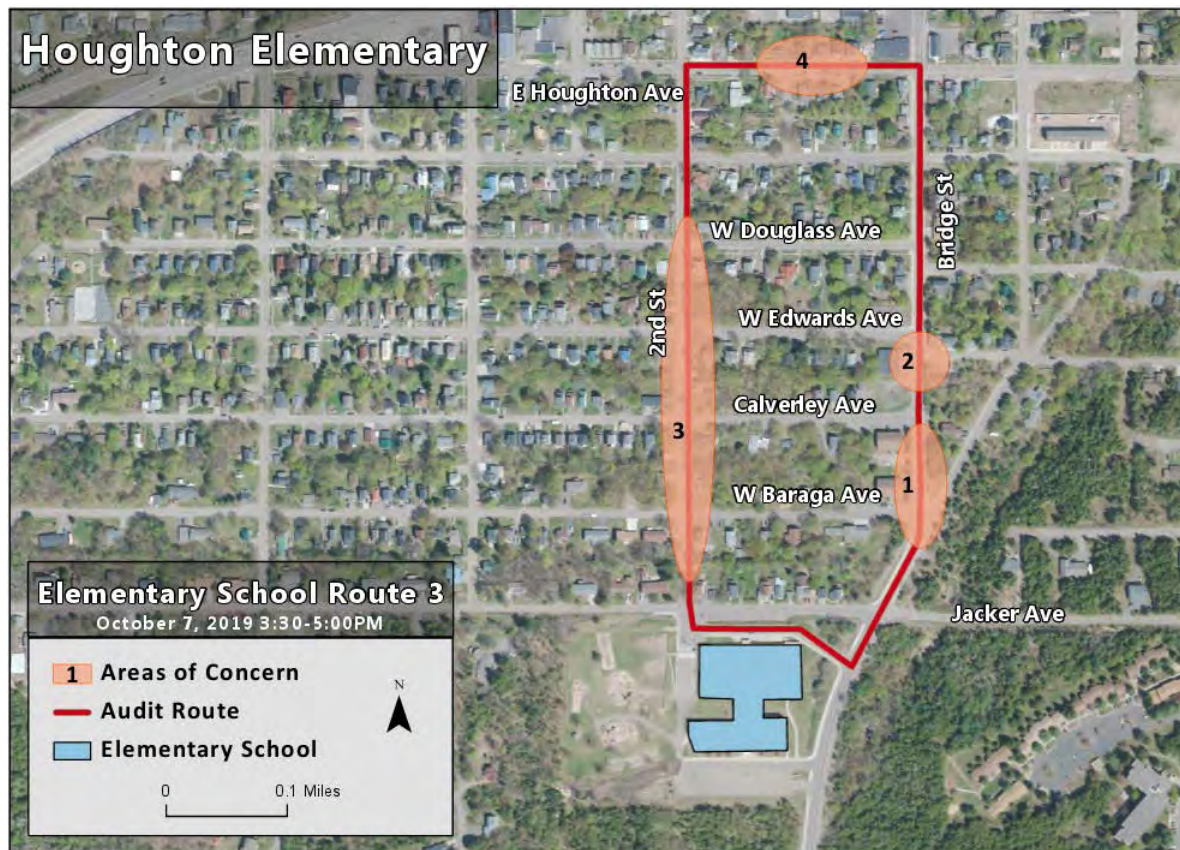
Parent

"I feel safer when the crosswalks are painted."

Kindergartener

The Walk:

Route 3: West Central Houghton



1 Bridge Street between Baraga Avenue and Calverly Avenue

Bridge Street, facing north



Lack of sidewalk on either side of road. Fast traffic. Poorly lit. Trees limiting visibility of drivers and pedestrians.

Baraga Avenue, facing east



Trees blocking visibility around corner from both directions. No crosswalk across Baraga Avenue. No sidewalk on Bridge Street.

2 Bridge Street between Calverly Avenue and Edwards Street

Bridge Street, facing north



Lack of sidewalk on either side of road. Fast traffic. Poorly lit.

Bridge Street, facing north



No crosswalk across Edwards Street.

3 Second Street

Second Street at Douglass Street



Steep stairs leading to crossing Douglass Street. No crosswalk across Douglass Street. Limited visibility.

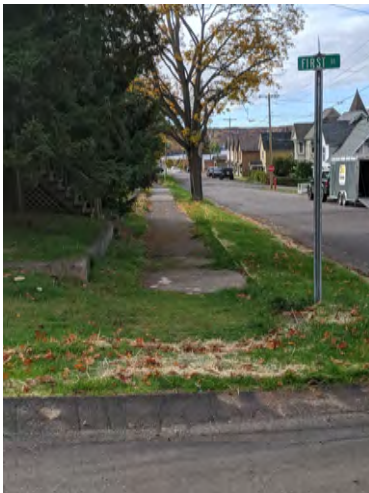
Second Street, facing south



Road narrows after Douglass Street crossing. No sidewalks. Limited visibility up due to steepness of hill.

4 Intersection of Houghton and Second Street

Houghton at Second Street



Missing patch of sidewalk after First Street.

Second Street, facing east

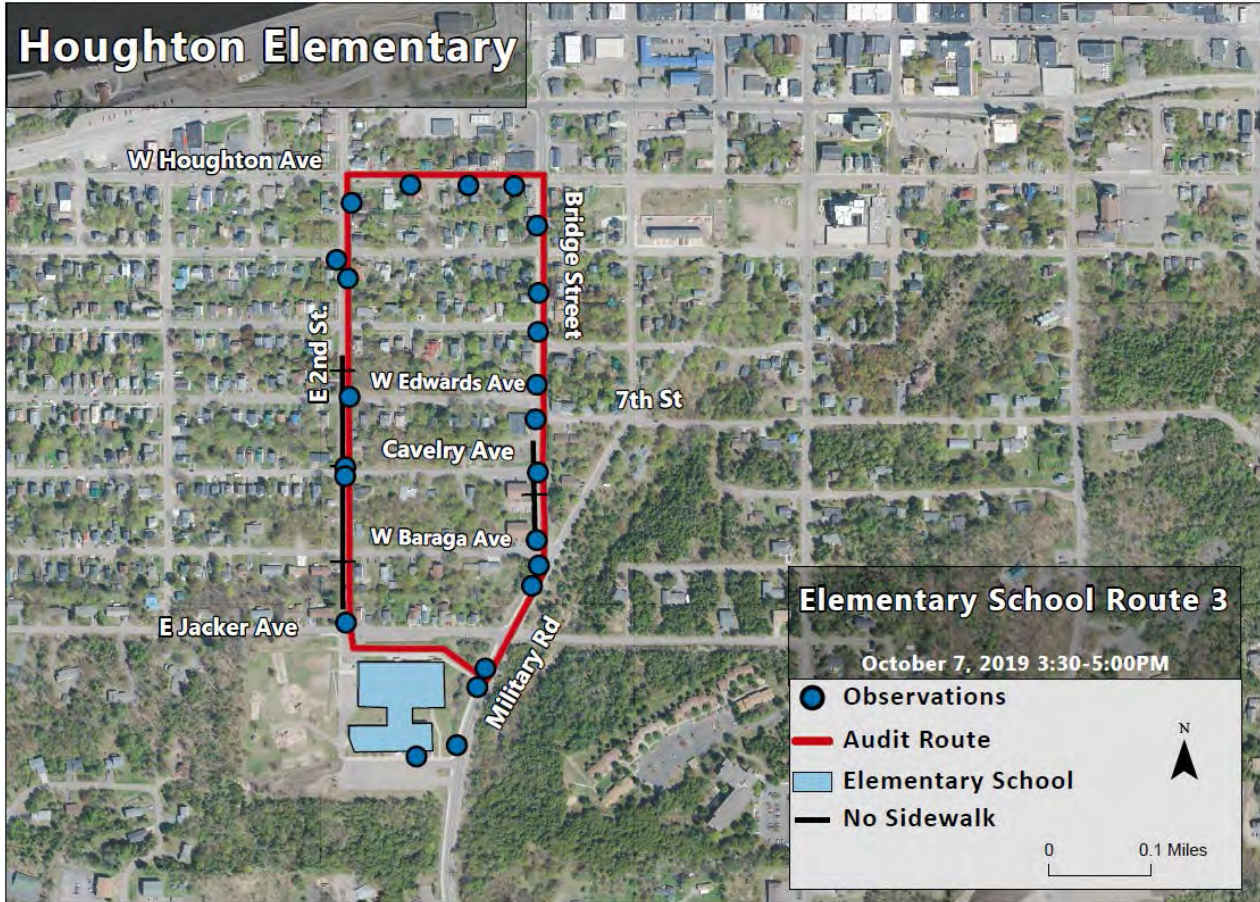


Degradation of existing sidewalk infrastructure.

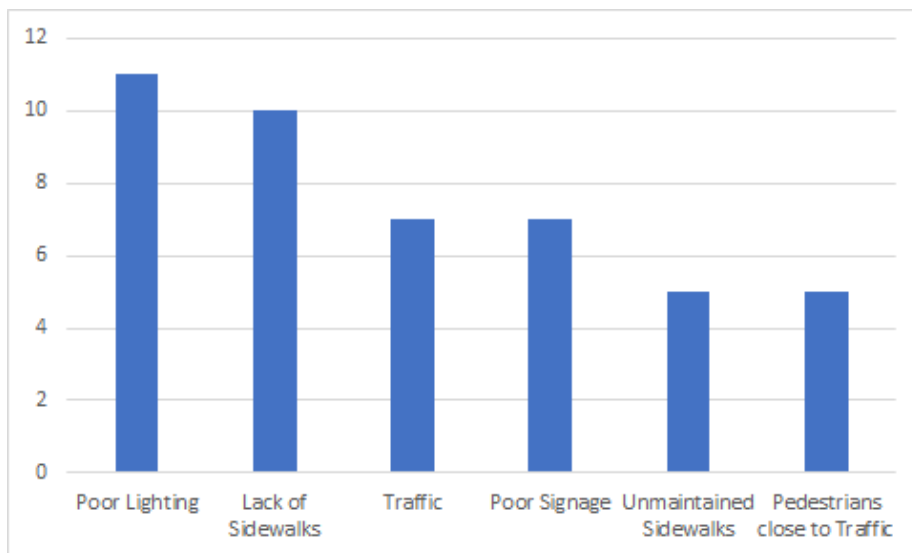
Houghton Elementary Walking Audit

Map of all observations

Route 3: West Central Houghton



Summary Statistics of Selected Observations Along Route





Houghton Elementary Walking Audit

Background

Route 4: South along Military road

Date: October 7th, 2019, 3:30-5PM Weather:

Partly cloudy high of 54°F, low of 41°F

Stakeholders Present:

MTU Professor
MTU Students

Top 5 Observations:

- Poor sidewalks
- Drivers get too close to pedestrians
- Lack of crossing signals
- Lack of sidewalks
- High traffic on Sharon Ave

Notables

"Its really scary, it feels like I should run"

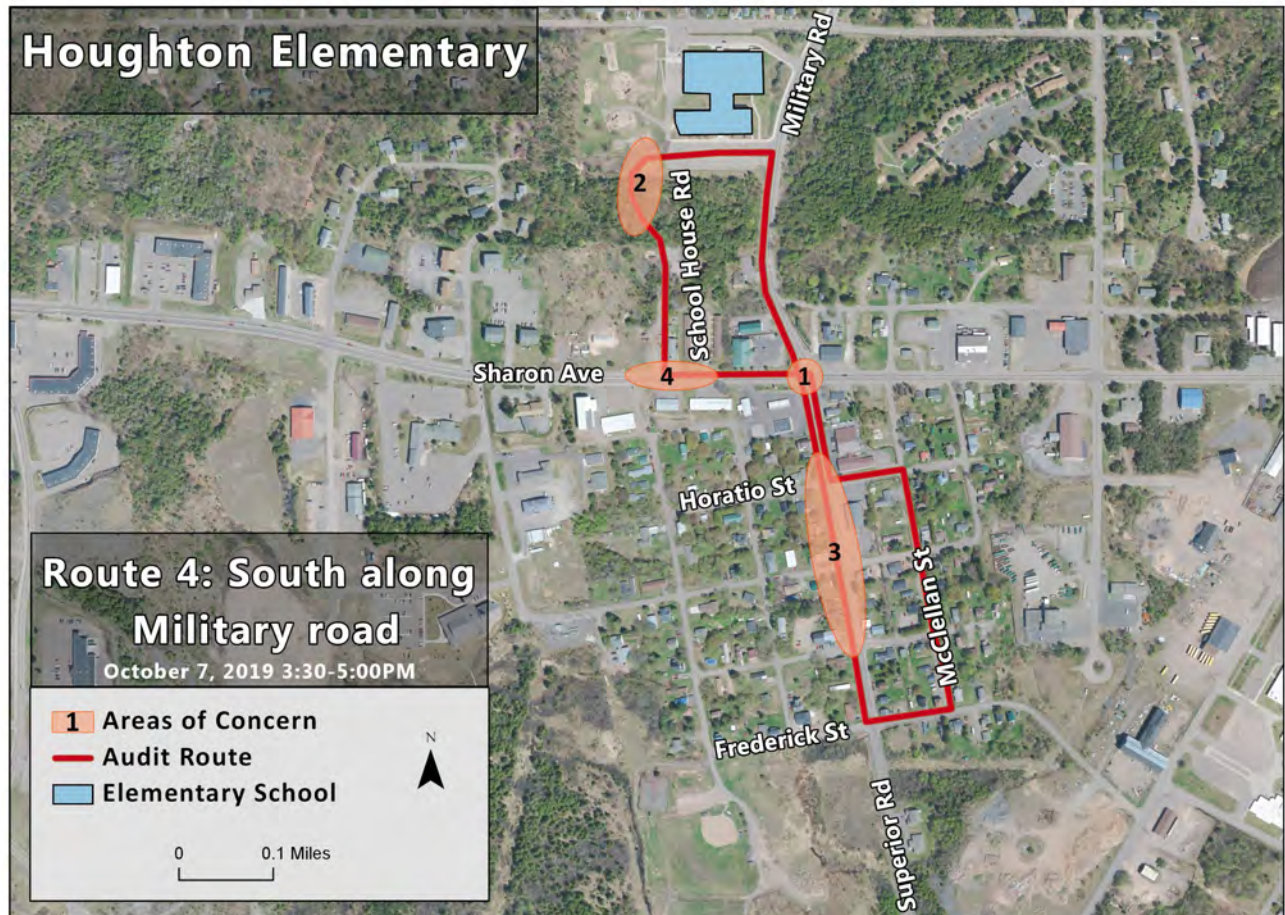
MTU Student

"Sharon Ave is loud"

MTU Student

The Walk:

Route 4: Neighborhood South of Houghton Elementary School



1 Sharon Ave and Military Road

Military Road, facing south



Street is too narrow and there is little distinction between the road and the sidewalk. Cars have low visibility when turning.

Sharon Ave, facing north



Cars creep up on pedestrians and do not yield.

2 Schoolhouse Road

Schoolhouse Road, facing north



No sidewalk is present. When sidewalk is present, only one side is available.



Shortcut through parking lot maybe dangerous as there is no painted crosswalk.

3 Hurontown on Superior Street

Superior Street, facing south



Sidewalk is too narrow and is sometimes blocked or cluttered



Driver's view is obstructed with such a wide curve. Additionally no sidewalk is present.

Superior Street, facing east



Street is wide but lacks sidewalk or trail.

4 Sharon Ave towards Schoolhouse Rd

Sharon Ave, facing west



No sidewalk and path is too narrow



No warning for school zone, or for speed limit. Existing Signs are damaged or down.

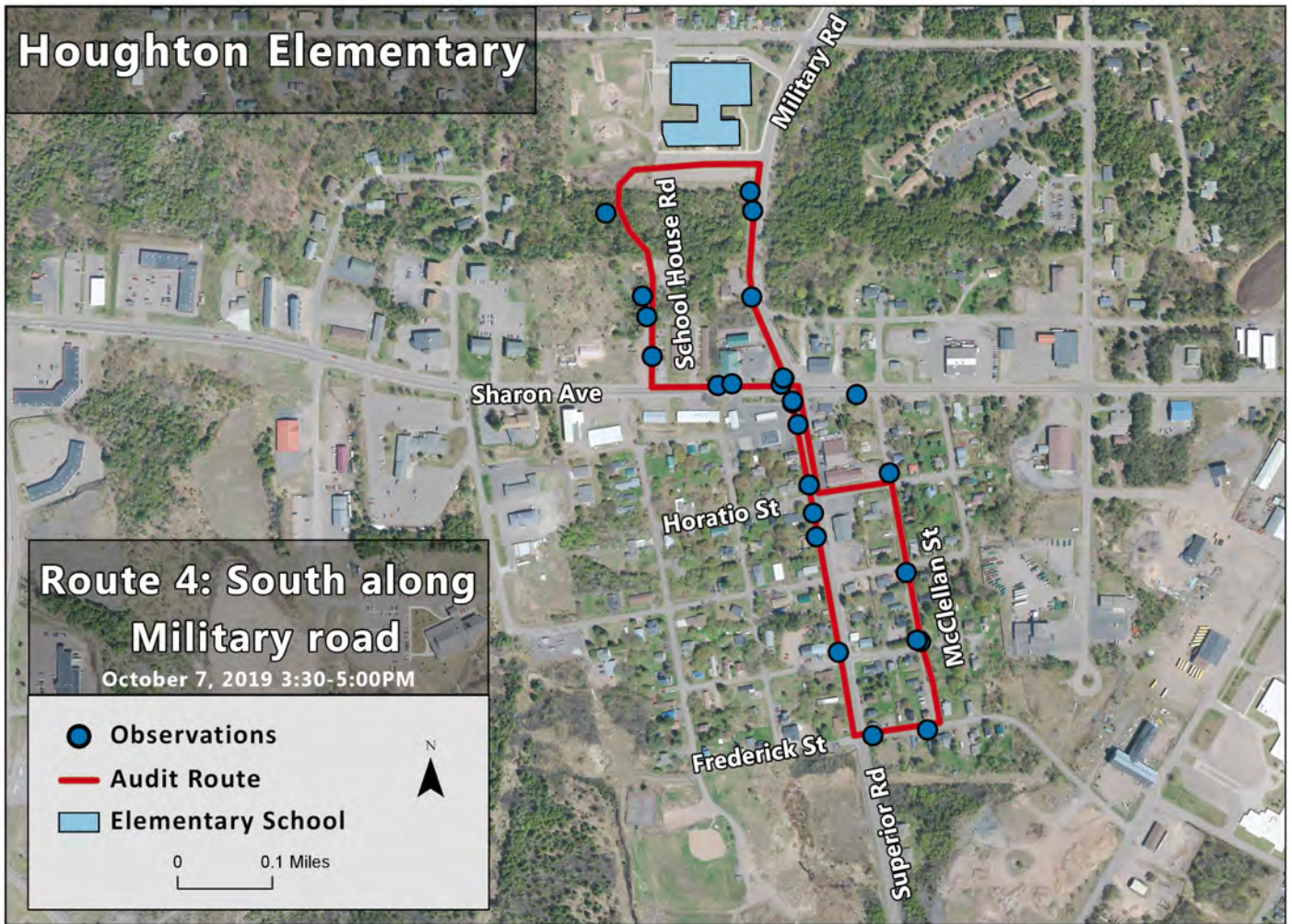


Unpaved shoulders. Too close to the oncoming traffic.

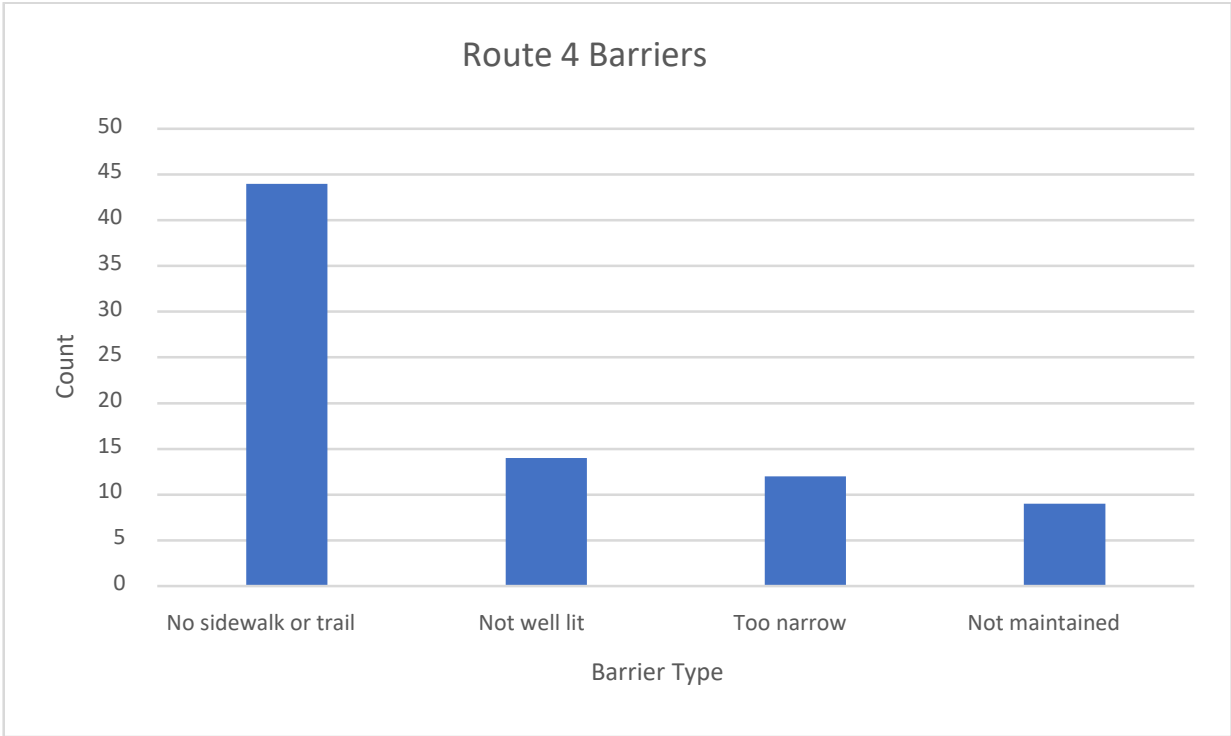
Houghton Elementary Walking Audit

Map of all observations

Route 4: South along Military road



Summary Statistics of Selected Observations Along Route



Houghton Elementary Walking Audit

Background

Date: October 7, 2019, 3:30-5:00PM

Weather: Partly cloudy, high of 54°F, low of 41°F

Stakeholders Present:

Grade 3 Student
Parent
MTU Student Researchers
MTU Professor

Top 5 Observations:

- No sidewalk or trail
- No pedestrian signal or marked crosswalk
- Driver's view obstructed
- Steep hill
- Speed limit is not obeyed

Notables

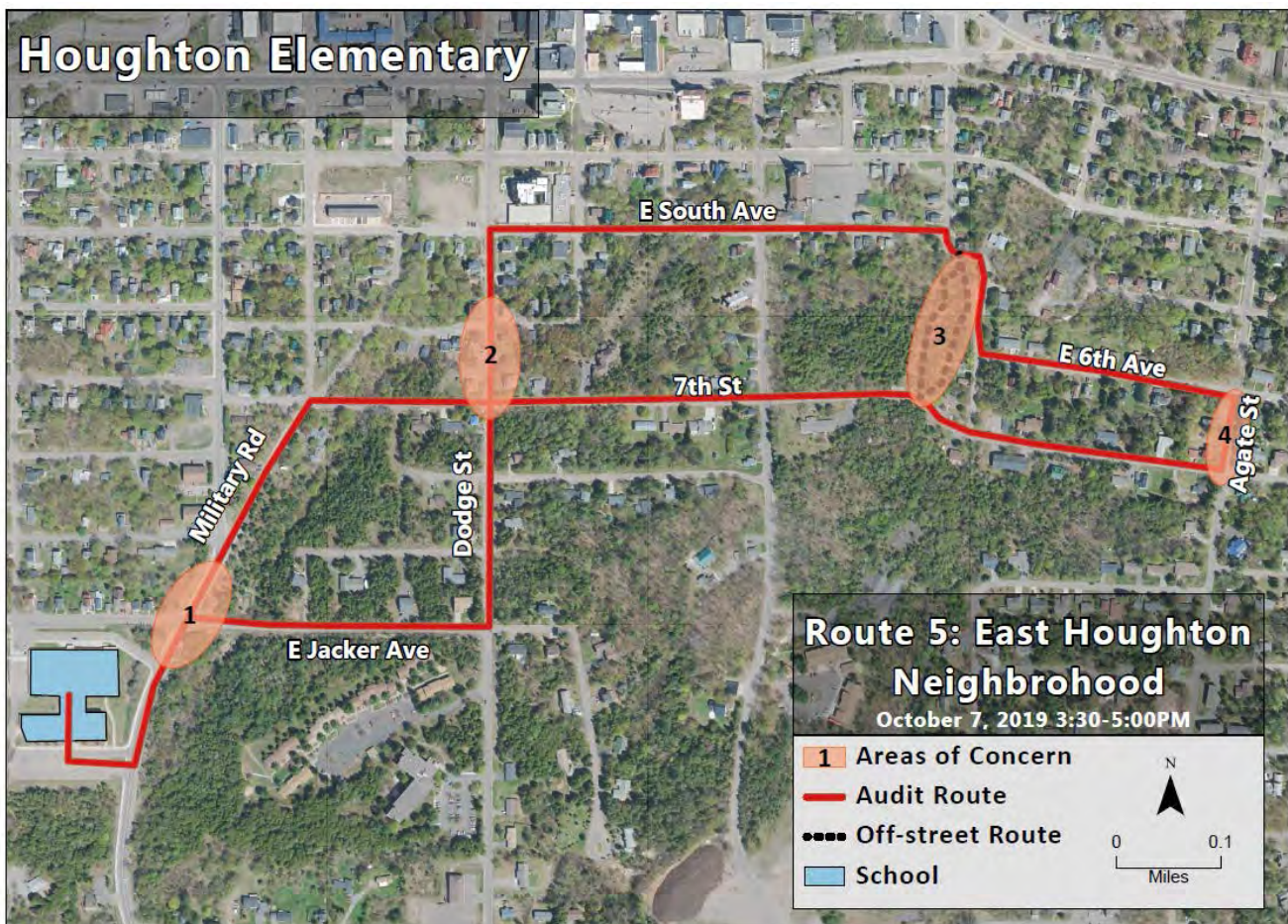
"We really need a crossing guard here." (at Bridge St. crosswalk)
- Parent of 3rd Grade Student

"It would be great if my kid walked at least one way."
- Parent of 3rd Grade Student

"I would enjoy walking with a friend!"
- Grade 3 Student

The Walk:

Route 5: East Houghton Neighborhood



1 Crossing Bridge St. - North of Elementary School



Bridge St. facing north

Fast, loud, and busy traffic. No signals and pedestrian crosswalk is not maintained. Large barrier for students when traveling to and from school.

2 8cX[YG4 North of Elementary School

Dodge St. facing north



Sidewalk only on one side of the street and abruptly ends before reaching the intersection of Dodge St. and 7th Ave. Path continued on grass is obstructed by a light pole and trees.

Dodge St. facing south



Dodge St. and 7th Ave. intersection is dangerous. Fast traffic and obstructed pedestrian view make it difficult to cross.

3 Central Houghton Greenspace Nature Area - Northeast of Elementary School



E South St. facing south

Owned by Keweenaw Land Trust. Trail is not well marked with poorly established paths. Unknown winter maintenance and snow clearance. Walk through wooded area is enjoyable and shortens travel time. Would be a good transport route if concerns are addressed.

4 Agate St. between E 6th Ave. and 7th Ave. - Northeast of Elementary School

Agate St. facing north

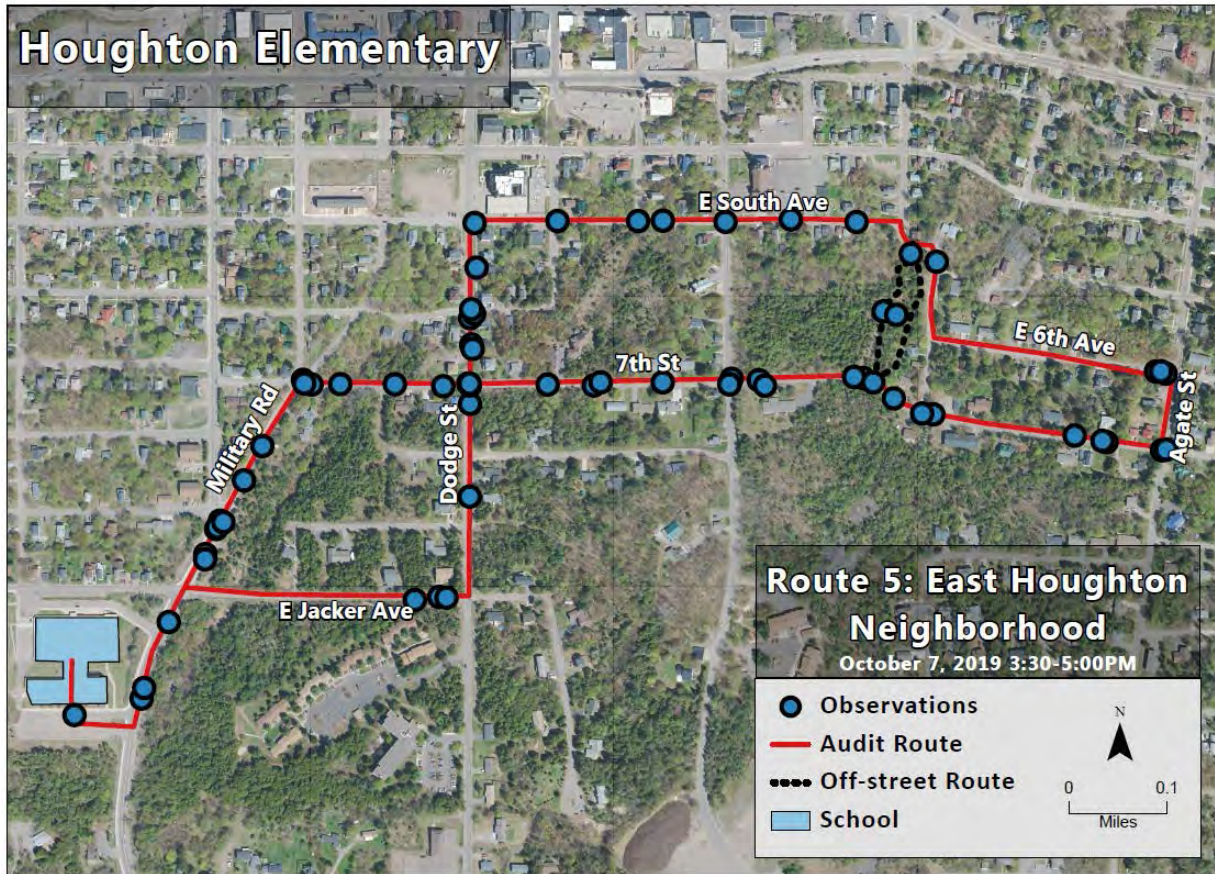
Driver and pedestrian views are obstructed due to steep slope. Fast traffic and high volume of pedestrians and vehicles. No sidewalks or safe pedestrian crossings present. Large snowbanks narrow the street in the winter, leaving little room for pedestrians to walk safely on the side.



Houghton Elementary Walking Audit

Map of all observations

Route 5: East Houghton Neighborhood



Summary Statistics of Selected Observations Along Route

